

MINISTRY FOR MAKING

REMADE DESIGN

Made from existing
resources.

The T-shirt Dress



Make time: 2-3 hours depending on stitching method and finishing
Resources needed: 3 t-shirts, hand or machine sewing equipment. Pins, scissors.

Note: REMADE Guides are intended to teach you methods and encourage experimentation, so you develop design skills and uncover new methods of creation. Each item made will be unique as you begin with existing resources and adjust the process to suit your figure, skills and taste.

The T-shirt Dress



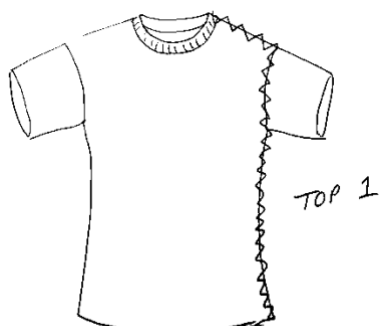
This stylish and comfortable dress is made with 3 x T-shirts. You can choose one colour, tonal colours or different patterns and shapes. You can use men's t-shirts or women's; however, you will get the best fit and quickest results if you ensure one of the t-shirts is your size as this will be used as the top of the dress. You can make this garment by hand-stitching or machine sewing. You can also dye the garment when you have finished or do some printing, applique, embroidery or bleach dye to give it a unique look. Once you have made one you will have the skills to make many other designs which will all be unique.

Getting Started – Selecting the right garments. The success and ease of making, are directly affected by the garments you choose. Always use good quality materials, not something that is pilled or threadbare as your finished garment will not last and your time and effort will be wasted. You can use a garment with a stain or holes as these can be covered either through strategically placed tucks or stitching or you can dye or print it either before or after making the dress. If you have really old and tattered t-shirts do not throw them away, as there are other designs in the REMADE range that are specifically designed for these types of items.

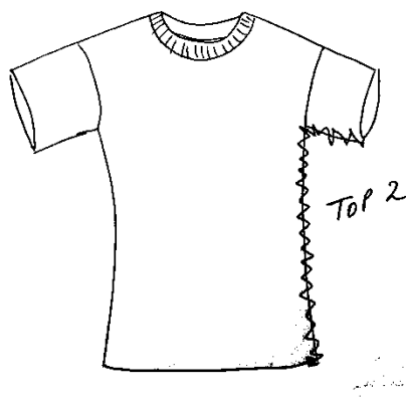
You need 3 x T-shirts.

You need to choose a top that fits you, this is referred to as the base.

You need two more t-shirts, which can be men's or women's styles, with long or short sleeves. Choose large sizes if you are medium to large size (L, XL or XXL).

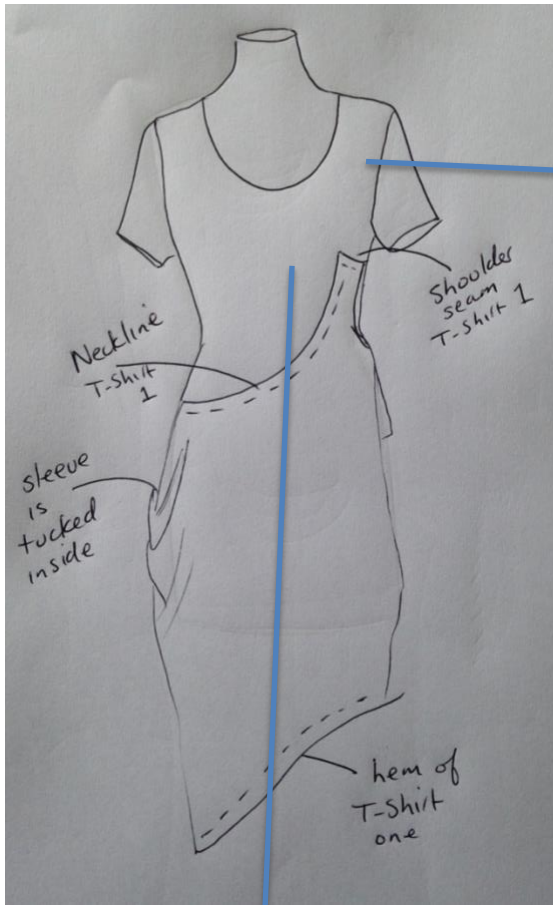


STEP ONE Cut the first t-shirt. Cut through the side seam, around the armhole and through the shoulder seam including through the neckline. Refer to image left the zig zag line is the cutting line.



STEP TWO Take top two and cut this along the line show as a zig zag, you are cutting the side seam from the hem all the way through the under arm and sleeve.

STEP THREE. Take t-shirt 1 and position the shoulder seam on the left front as indicated below, you can see the neckline drapes around the front of the garment, pin in place, and keep working all the way around the garment, Note the remaining sleeve will become a draped pocket on the right hip.



This is the back view, showing how t-shirt 1, is attached to the base garment. Note the positioning of the hem.

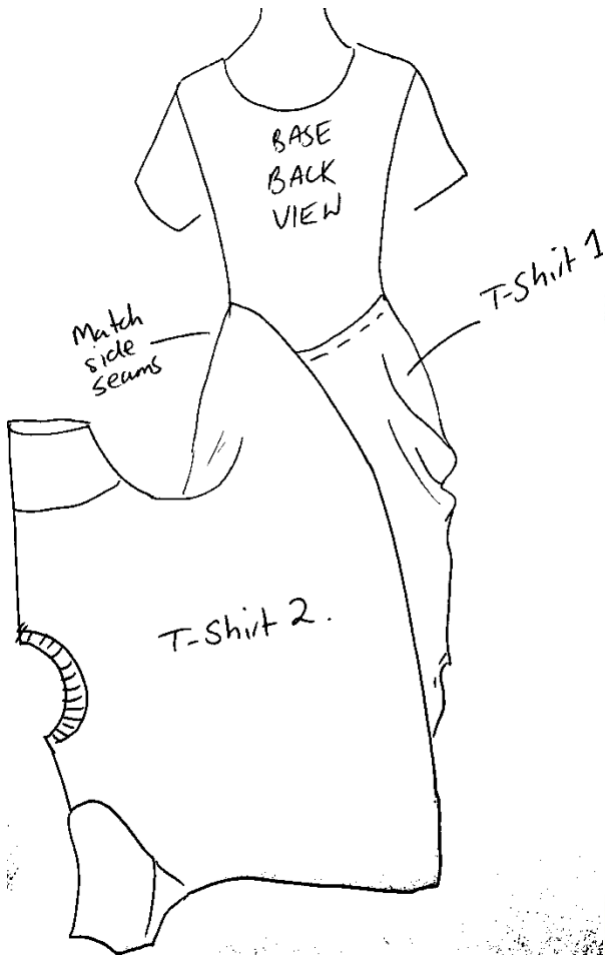


This is the back of the dress showing the neckline of t-shirt 1, being pinned onto the base garment.



This is the back view showing t-shirt 2 being attached to the side, over the top of the base garment and over laying the back of t-shirt 1.

STEP FOUR Take t-shirt 2 and align side seam of the hem with the side seam of the base top, and position t-shirt over the top of t-shirt 1, pin in place as you work the hem of t-shirt two to lay on the front and back of the garment over t-shirt one.



BACK VIEW



This image shows the front of the dress with the hemline of t-shirt 2 now pinned onto t-shirt 1.



This image is the side of the dress where the sleeve from t-shirt two is, you need to decide how you want this to sit, this image shows the under arm has been lifted and pinned to the side of the garment to create a draped area.



STEP FIVE Once you are happy with the positioning of the garments, either hand sew or machine sew the items into place. You may wish to put some pleats into the front of the garment when positioning the hem of t-shirt two, to add interest that will be complimentary to most figures.



This image shows how the same process has been used but with a long sleeve fitted t-shirt. Once you have tried these techniques you just need to experiment with placement.



Close up detail of the stitching. This is a running stitch and is in a contrast colour.



Side view of sleeve creating a draped pocket.



Back view of the dress with large contrasting hand stitches.



this is the sleeve cuff

Back view of dress showing how the long sleeve is positioned towards the side and stitched in place to create a long draped effect



Once you have made one dress you will understand the process of making. I encourage you to experiment further, by adapting the placement of the garments, trying different cuts, using more t-shirts and adding tucks, gathers, and decorative elements.

The Remade Designs are intended as a Guide only, as we want you to learn the skills and have confidence in experimentation, as only through trial and error will you develop new ideas and expand your design ability.

Good luck and Happy Making!

Please join our community of Makers and post your finished items for others to see and share in your success. Upload to our blog and share on facebook. Ministry for Making

Many Thanks!

*All designs and methods are copyright to D. Laraman 2015. Instructions and images are for personal use only and cannot be used for commercial purposes, resold, shared or copied without the consent of the copyright owner.

